

## ANNEX IV

Periodic disclosure for the financial products referred to in Article 8, paragraphs 1, 2 and 2a, of Regulation (EU) 2019/2088 and Article 6, first paragraph, of Regulation (EU) 2020/852

**Product name:**  
DPAM B Equities Euroland Sustainable

**Legal entity identifier:**  
5493000VCZTSGS1H8084

## Environmental and/or social characteristics

**Sustainable investment** means an investment in an economic activity that contributes to an environmental or social objective, provided that the investment does not significantly harm any environmental or social objective and that the investee companies follow good governance practices.

The **EU Taxonomy** is a classification system laid down in Regulation (EU) 2020/852, establishing a list of **environmentally sustainable economic activities**. That Regulation does not lay down a list of socially sustainable economic activities. Sustainable investments with an environmental objective might be aligned with the Taxonomy or not.

Did this financial product have a sustainable investment objective?	
<input checked="" type="radio"/> <input type="radio"/> <input type="checkbox"/> <b>Yes</b>	<input type="radio"/> <input checked="" type="radio"/> <input checked="" type="checkbox"/> <b>No</b>
<input type="checkbox"/> It made <b>sustainable investments with an environmental objective</b> : ____% <div> <input type="checkbox"/> in economic activities that qualify as environmentally sustainable under the EU Taxonomy           <input type="checkbox"/> in economic activities that do not qualify as environmentally sustainable under the EU Taxonomy           </div>	<input checked="" type="checkbox"/> It <b>promoted Environmental/Social (E/S) characteristics</b> and while it did not have as its objective a sustainable investment, it had a proportion of 87.22% of sustainable investments <div> <input checked="" type="checkbox"/> with an environmental objective in economic activities that qualify as environmentally sustainable under the EU Taxonomy           <input checked="" type="checkbox"/> with an environmental objective in economic activities that do not qualify as environmentally sustainable under the EU Taxonomy           <input checked="" type="checkbox"/> with a social objective           </div>
<input type="checkbox"/> It made <b>sustainable investments with a social objective</b> : ____%	<input type="checkbox"/> It promoted E/S characteristics, but <b>did not make any sustainable investments</b>



**Sustainability indicators** measure how the environmental or social characteristics promoted by the financial product are attained.

## To what extent were the environmental and/or social characteristics promoted by this financial product met?

During the Reference Period, the Sub-fund promoted environmental and social characteristics through a rigorous methodology aimed at

- defending fundamental rights (human rights, labour rights, anti-corruption and environmental protection).
- not funding controversial activities and behaviors that could affect the long-term reputation of the investments.
- promoting environmental, social and governance (ESG) best practices and best efforts.

The sub-fund has not designated any benchmark index to achieve the environmental and social characteristics it promotes within the meaning of Article 8 of the Regulation (EU) 2019/2088 of 27 November 2019 on sustainability reporting in the financial services sector (the "SFDR 2019/2088").

Derivative financial products, if any, used for the purpose of achieving the investment objectives of the Sub-fund have not been used for the purpose of promoting environmental and/or social characteristics.

### ● *How did the sustainability indicators perform?*

During the Reference Period, the Sub-fund achieved the following sustainability indicators:

- a. The Sub-fund has not been exposed to companies considered to be non-compliant with Global Standards;
- b. The Sub-fund has not been exposed to companies involved in controversial activities according to the definitions and thresholds stipulated by DPAM's Controversial Activities Policy (accessible via the link [https://res.cloudinary.com/degroof-petercam-asset-management/image/upload/v1614006839/DPAM\\_policy\\_Controversial\\_activities.pdf](https://res.cloudinary.com/degroof-petercam-asset-management/image/upload/v1614006839/DPAM_policy_Controversial_activities.pdf));
- c. The Sub-fund has no exposure to companies facing ESG controversies of maximum severity;
- d. The Sub-fund had a worse weighted average ESG profile than its benchmark, before the application of the ESG and sustainable investment selection methodology: 61.70 compared to 61.92 (as at 31/12/2022).
- e. The greenhouse gas (GHG) emissions intensity of the Sub-fund was lower than the average GHG emissions intensity of the benchmark prior to the application of the ESG and sustainable investment selection methodology: 688.61 tCO<sub>2</sub>e/M revenue compared to 998.11 tCO<sub>2</sub>e/mn revenue (as at 31/12/2022).

### ● *...and compared to previous periods?*

Not applicable

● ***What were the objectives of the sustainable investments that the financial product partially made and how did the sustainable investment contribute to such objectives?***

For the Reference Period, the Sub-fund would aim to have at least 50% sustainable investments i.e. investments aimed at:

- companies aligned with one of the first two objectives of the EU taxonomy (climate change mitigation and adaptation);
- companies aiming to make a net positive contribution to the United Nations (UN) Sustainable Development Goals ("SDGs"), which are environmental in nature;
- companies aiming to make a net positive contribution to the social SDGs; and
- at the level of the overall portfolio, a minimum of 20% of companies making a net positive<sup>1</sup> contribution to all SDGs.

For the Reference Period, the Sub-fund had 87.22% sustainable investments. These sustainable investments have contributed to the Sub-fund's partial sustainable investment objective in the following ways:

- 4.16% of the Sub-fund's portfolio contributed to the achievement of the environmental objectives defined by the EU Taxonomy (climate change mitigation and adaptation);
- 53.92% of the Sub-fund's portfolio contributed to the achievement of environmental objectives not aligned with the EU Taxonomy;
- 83.28% of the Sub-fund's portfolio contributed to the achievement of social objectives.
- 65.79% of the Sub-fund's portfolio was invested in companies making a net positive contribution to the SDGs (including impact bonds).

● ***How did the sustainable investments that the financial product partially made not cause significant harm to any environmental or social sustainable investment objective?***

DPAM ensures that the Sub-fund's sustainable investments during the Reference Period do not materially undermine an environmentally or socially sustainable investment objective by:

---

<sup>1</sup> The net positive contribution is the difference between the positive and negative impact contributions and is calculated at the level of the invested company and the overall portfolio. Based on the SDGs framework, the net positive contribution takes into account on the one hand (1) the extent to which the invested company's products and services contribute to the achievement of the SDGs and on the other hand (2) the negative impacts of their activities along the value chain.

**Issuer level:**

- Consideration of the principal adverse impacts on the mandatory sustainability factors (hereinafter "PAIs") listed in Table 1 of Annex 1 of the Delegated Regulation (EU) 2022/1288 which allows for the reduction of the negative impacts of the investment, including:
  - by incorporating several elements to avoid and/or reduce its exposure to activities or behaviours that could affect another environmental or social objective (such as the Global Standards compliance filter and the exclusion of ESG controversies of maximum severity or activities most harmful to other environmental and/or social objectives);
  - via an engagement process with investee companies, in accordance with its Engagement Policy, which can be accessed at [https://res.cloudinary.com/degroof-petercam-asset-management/image/upload/v1614006835/DPAM\\_policy\\_engagement.pdf](https://res.cloudinary.com/degroof-petercam-asset-management/image/upload/v1614006835/DPAM_policy_engagement.pdf). The commitments made by DPAM are also the subject of an annual report available at ([https://res.cloudinary.com/degroof-petercam-asset-management/image/upload/v1614006835/DPAM\\_report\\_engagement\\_activity.pdf](https://res.cloudinary.com/degroof-petercam-asset-management/image/upload/v1614006835/DPAM_report_engagement_activity.pdf)).
- An impact calculation methodology which takes into account the positive and negative contribution of the company's products and services to the SDGs in order to optimise the net positive (resulting) contribution.

**Overall portfolio level:**

- A rule of minimum 20% of assets aligned with the EU Taxonomy or in net positive contribution on all 17 SDGs. During the Reference Period, a minimum 65.79 % of the assets were aligned with the EU Taxonomy or making a net positive contribution on all 17 SDGs.

*— How were the indicators for adverse impacts on sustainability factors taken into account?*

During the Reference Period, the Sub-fund considered all the principal adverse impacts on sustainability factors (hereinafter "PAI") listed in Table 1 of Appendix I of the Delegated Regulation (EU) 2022/1288. The PAIs are intrinsically linked to DPAM's commitment to reduce the negative impact of the Sub-fund's investments by avoiding activities or behaviors that may significantly hinder sustainable and inclusive growth. This commitment is incorporated throughout the research and investment process from its incorporation.

In concrete terms, the PAIs have been integrated into the various stages of the Sub-fund's construction upstream via exclusions and the resulting eligible

universe (i), and throughout the investment process via fundamental analysis, monitoring of controversies and ongoing dialogue with the companies invested in (ii):

1) Firstly, with regard to environmental PAIs:

- a) they have been analyzed and monitored at the level of the invested issuers, particularly with respect to PAI related to greenhouse gas emissions and energy performance, including through DPAM's searches under the recommendations of the Task Force on Climate-Related Financial Disclosures (TCFD).

Thus, indicators related to greenhouse gas emissions and water have been integrated into the analysis of the five companies that contribute most to the carbon intensity of the portfolio. This analysis is used by research and management to validate their investment decisions.

- b) After that, the Global Standards compliance filter includes a filter on environmental protection. Companies that do not comply with global standards for significant environmental protection breaches related to pollution (emissions), water, waste and biodiversity were thus excluded from the portfolio in advance.
- c) the exclusion filter for companies involved in controversial activities (in accordance with DPAM's Controversial Activities Policy (accessible at [https://res.cloudinary.com/degroof-petercam-asset-management/image/upload/v1614006839/DPAM\\_policy\\_Controversial\\_activities.pdf](https://res.cloudinary.com/degroof-petercam-asset-management/image/upload/v1614006839/DPAM_policy_Controversial_activities.pdf))). has been applied. The exclusion of companies involved in thermal coal production, for example, allows for better coverage of indicators such as biodiversity and greenhouse gas emissions.

The filtering and analysis based on the main ESG controversies in which companies may be involved also includes controversies related to environmental issues such as the environmental impact of the company's operations (emissions, waste, energy use, biodiversity, and water consumption), the environmental impact of the supply chain, and the impact of products and services (carbon and environmental impact).

- d) Similarly, environmental indicators have been included in the analysis of the ESG profile of companies and impact their best-in-class ranking.

2) Second, the social PAIs were systematically analyzed according to the stages of the research and investment process:

- a) the Global Standards compliance filter is structured around human rights, labor rights and the prevention of corruption. Thus, companies in breach of the Global Compact principles and the OECD Guidelines for Multinational Enterprises have been de facto excluded from the investment universe.
- b) the exclusion filter for companies involved in controversial activities (definitions and thresholds in accordance with DPAM's Controversial Activities Policy (available at <https://res.cloudinary.com/degroof-petercam-asset->

[management/image/upload/v1614006839/DPAM\\_policy\\_Controversial\\_activities.pdf](#)). In this way, companies involved in controversial armaments were directly excluded from the investment universe.

- c) In addition, the screening and analysis based on the main ESG controversies in which companies may be involved also includes controversies related to social issues, i.e. society and community, customer and employee, and controversies related to governance issues such as business ethics, including corruption and bribery.
- d) The issue of gender diversity within the board of directors has been addressed primarily through shareholder responsibility, by voting against or engaging in dialogue with companies that do not meet a minimum of 30% gender diversity on their boards. DPAM participated in 706 general and extraordinary meetings on behalf of 651 companies in 2022.
- e) Similarly, social indicators are included in the analysis of the ESG profile of companies and impact their best-in-class ranking.

DPAM's approach and processes are further described in its Sustainable and Responsible Investments Policy and in the TCFD report, which are available at [https://res.cloudinary.com/degroof-petercam-asset-management/image/upload/v1614006836/DPAM\\_policy\\_Sustainable\\_and\\_Responsible\\_Investment.pdf](https://res.cloudinary.com/degroof-petercam-asset-management/image/upload/v1614006836/DPAM_policy_Sustainable_and_Responsible_Investment.pdf) and [DPAM report TCFD.pdf](#) (cloudinary.com).

— *Were sustainable investments aligned with the OECD Guidelines for Multinational Enterprises and the UN Guiding Principles on Business and Human Rights? Details:*

The first stage of the Sub-fund's investment is based on a normative screening, which includes compliance with Global Standards based on human rights, labour rights and the prevention of corruption. These include the OECD Guidelines for Multinational Enterprises and the UN Guidelines on Business and Human Rights. Multinational companies that do not meet these criteria are excluded from the eligible investment universe. The Sub-fund has therefore not been invested during the Reference Period in any company that is deemed not to comply with these principles.

*The EU Taxonomy sets out a "do not significant harm" principle by which Taxonomy-aligned investments should not significantly harm EU Taxonomy objectives and is accompanied by specific Union criteria.*

The "do no significant harm" principle applies only to those investments underlying the financial product that take into account the Union criteria for environmentally sustainable economic activities. The investments underlying the remaining portion of this financial product do not take into account the Union criteria for environmentally sustainable economic activities.

*Any other sustainable investments must also not significantly harm any environmental or social objectives.*



## How did this financial product consider principal adverse impacts on sustainability factors?

**Principal adverse impacts** are the most significant negative impacts of investment decisions on sustainability factors relating to environmental, social and employee matters, respect for human rights, anti-corruption and anti-bribery matters.

During the Reference Period, the Sub-fund considered all the principal adverse impacts on sustainability factors (hereinafter "PAI") listed in Table 1 of Appendix I of the Delegated Regulation (EU) 2022/1288.

The PAIs are intrinsically linked to DPAM's commitment to reduce the negative impact of the Sub-fund's investments by avoiding activities or behaviors that may significantly hinder sustainable and inclusive growth. This commitment is incorporated throughout the research and investment process from its inception.

In concrete terms, the PAIs have been integrated into the various stages of the Sub-fund's construction upstream via exclusions and the resulting eligible universe (i), and throughout the investment process via fundamental analysis, monitoring of controversies and ongoing dialogue with the companies invested in (ii):

- 1) Firstly, with regard to environmental PAIs:
  - a) they have been analyzed and monitored at the level of the invested issuers, particularly with respect to PAI related to greenhouse gas emissions and energy performance, including through DPAM's searches under the recommendations of the Task Force on Climate-Related Financial Disclosures (TCFD).  
Thus, indicators related to greenhouse gas emissions and water have been integrated into the analysis of the five companies that contribute most to the carbon intensity of the portfolio. This analysis is used by research and management to validate their investment decisions.
  - b) After that, the Global Standards compliance filter includes a filter on environmental protection. Companies that do not comply with global standards for significant environmental protection breaches related to pollution (emissions), water, waste and biodiversity were thus excluded from the portfolio in advance.
  - c) the exclusion filter for companies involved in controversial activities (in accordance with DPAM's Controversial Activities Policy (accessible at [https://res.cloudinary.com/degroof-petercam-asset-management/image/upload/v1614006839/DPAM\\_policy\\_Controversial\\_activities.pdf](https://res.cloudinary.com/degroof-petercam-asset-management/image/upload/v1614006839/DPAM_policy_Controversial_activities.pdf))). has been applied. The exclusion of companies involved in thermal coal production, for example, allows for better coverage of indicators such as biodiversity and greenhouse gas emissions. The filtering and analysis based on the main ESG controversies in which companies may be involved also includes controversies related to environmental issues such as the environmental impact of the company's operations (emissions, waste, energy use, biodiversity, and water consumption), the environmental impact of the supply chain, and the impact of products and services (carbon and environmental impact).
  - d) Similarly, environmental indicators have been included in the analysis of the ESG profile of companies and impact their best-in-class ranking.

2) Second, the social PAIs were systematically analyzed according to the stages of the research and investment process:

- a) the Global Standards compliance filter is structured around human rights, labor rights and the prevention of corruption. Thus, companies in breach of the Global Compact principles and the OECD Guidelines for Multinational Enterprises have been de facto excluded from the investment universe.
- b) the exclusion filter for companies involved in controversial activities (definitions and thresholds in accordance with DPAM's Controversial Activities Policy (available at [https://res.cloudinary.com/degroof-petercam-asset-management/image/upload/v1614006839/DPAM\\_policy\\_Controversial\\_activities.pdf](https://res.cloudinary.com/degroof-petercam-asset-management/image/upload/v1614006839/DPAM_policy_Controversial_activities.pdf)). In this way, companies involved in controversial armaments were directly excluded from the investment universe.
- c) In addition, the screening and analysis based on the main ESG controversies in which companies may be involved also includes controversies related to social issues, i.e. society and community, customer and employee, and controversies related to governance issues such as business ethics, including corruption and bribery.
- d) The issue of board gender diversity is addressed primarily through shareholder responsibility, by voting against or engaging in dialogue with companies that do not meet a minimum of 30% gender diversity on their boards. DPAM participated in 706 general and extraordinary meetings on behalf of 651 companies in 2022.
- e) Similarly, social indicators are included in the analysis of the ESG profile of companies and impact their best-in-class ranking.

DPAM's approach and processes are further described in its Sustainable and Responsible Investments Policy and in the TCFD report, which are available at [https://res.cloudinary.com/degroof-petercam-asset-management/image/upload/v1614006836/DPAM\\_policy\\_Sustainable\\_and\\_Responsible\\_Investment.pdf](https://res.cloudinary.com/degroof-petercam-asset-management/image/upload/v1614006836/DPAM_policy_Sustainable_and_Responsible_Investment.pdf) and [DPAM report TCFD.pdf](https://res.cloudinary.com/degroof-petercam-asset-management/image/upload/v1614006836/DPAM_report_TCFD.pdf) (cloudinary.com).



## What were the top investments of this financial product?

The list includes the investments constituting the **greatest proportion of investments** of the financial product during the reference period which is: 31/12/2022

Largest investments	Sector	% Assets	Country
SCHNEIDER ELECTRIC	MANUFACTURING	5.66 %	France
LVMH	MANUFACTURING	5.55 %	France
ASML HOLDING	MANUFACTURING	4.78 %	Netherlands
MERCK KGAA	MANUFACTURING	4.61 %	Germany
AIR LIQUIDE (PORT)	MANUFACTURING	4.60 %	France
	ELECTRICITY, GAS, STEAM AND AIR		
IBERDROLA SA	CONDITIONING SUPPLY	3.95 %	Spain
KBC GROEP	FINANCIAL AND INSURANCE ACTIVITIES	3.90 %	Belgium
BNP PARIBAS	FINANCIAL AND INSURANCE ACTIVITIES	3.64 %	France
HANNOVER RUCK SE	FINANCIAL AND INSURANCE ACTIVITIES	2.90 %	Germany
BEIERSDORF	MANUFACTURING	2.80 %	Germany



SAP AG	INFORMATION AND COMMUNICATION	2.61 %	Germany
L'OREAL SA	MANUFACTURING	2.55 %	France
AMADEUS IT GROUP SA	INFORMATION AND COMMUNICATION	2.48 %	Spain
KONINKLIJKE DSM	MANUFACTURING	2.45 %	Netherlands
ALLIANZ (NOM)	FINANCIAL AND INSURANCE ACTIVITIES	2.44 %	Germany



## What was the proportion of sustainability-related investments?

### ● *What was the asset allocation?*

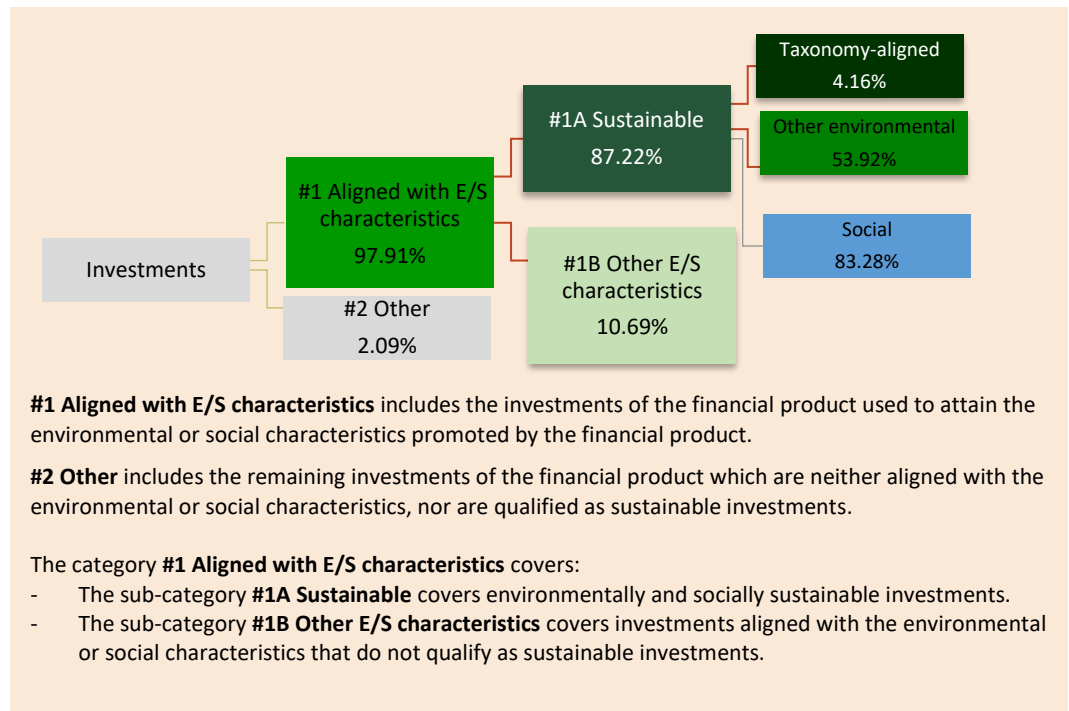
By applying the investment strategy described above, the Sub-fund invests 97.91% of its assets in securities that meet the environmental and social characteristics it promotes (in the table referred to as “#1 Aligned with E/S characteristics”).

The Sub-fund invests at least 87.22% of its assets in sustainable investments with environmental or social objectives (in the table referred to as “#1A Sustainable”).

The percentage of the portfolio invested in sustainable investments that meet an environmental and/or social objective (#1A Sustainable) is calculated using the cascade methodology described in the prospectus (section "What are the sustainable investment objectives that the financial product intends to partially achieve and how does the sustainable investment contribute to these objectives?"), which excludes double counting at the cascade level: an investment qualifying as sustainable at the level of a first element of the cascade is not then taken into account at the level of subsequent elements of the cascade.

In contrast, the percentages of the two sub-categories of sustainable investments (#1A Sustainable) in the portfolio invested in environmental investments other than those aligned with the taxonomy and social investments may involve some double counting. All portfolio companies are analysed against both (i) the environmental SDGs (and therefore may fall into the sub-category 'other environmental investments' even if they are also considered to be aligned with the taxonomy and/or as a social sustainable investment) and (ii) the social SDGs (and therefore may fall into the sub-category 'social investments' even if they are also considered to be aligned with the taxonomy and/or as an other environmental investment).

**Asset allocation**  
describes the share  
of investments in  
specific assets.



### ● In which economic sectors were the investments made?

Sector	Sub-sector	% of assets
Manufacturing	Manufacture of chemicals and chemical products	12.40 %
Financial and insurance activities	Financial service activities, except insurance and pension funding	11.25 %
Manufacturing	Manufacture of wearing apparel	6.97 %
Financial and insurance activities	Insurance, reinsurance and pension funding, except compulsory social security	6.35 %
Manufacturing	Manufacture of basic pharmaceutical products and pharmaceutical preparations	6.29 %
Manufacturing	Manufacture of computer, electronic and optical products	6.08 %
Manufacturing	Manufacture of electrical equipment	5.66 %
Electricity, gas, steam and air conditioning supply	Electricity, gas, steam and air conditioning supply	4.68 %
Wholesale and retail trade; repair of motor vehicles and motorcycles	Wholesale trade, except of motor vehicles and motorcycles	4.30 %
Information and communication	Telecommunications	3.96 %
Manufacturing	Manufacture of machinery and equipment n.e.c.	3.82 %
Information and communication	Publishing activities	3.29 %
Administrative and support service activities	Office administrative, office support and other business support activities	2.69 %
Information and communication	Computer programming, consultancy and related activities	2.48 %
Manufacturing	Manufacture of motor vehicles, trailers and semi-trailers	2.40 %
Manufacturing	Other manufacturing	1.90 %
Manufacturing	Manufacture of food products	1.64 %
Financial and insurance activities	Activities auxiliary to financial services and insurance activities	1.57 %

Professional, scientific and technical activities	Architectural and engineering activities; technical testing and analysis	1.49 %
Transportation and storage	Postal and courier activities	1.36 %
Manufacturing	Manufacture of paper and paper products	1.30 %
Manufacturing	Manufacture of wood and of products of wood and cork, straw and plaiting	1.29 %
Construction	Civil engineering	1.13 %
Manufacturing	Manufacture of coke and refined petroleum products	1.00 %
Accommodation and food service activities	Food and beverage service activities	0.91 %
Manufacturing	Manufacture of leather and related products	0.80 %
Manufacturing	Manufacture of rubber and plastic products	0.58 %
Administrative and support service activities	Rental and leasing activities	0.32 %
Cash	Cash	2.09 %



### **To what extent were the sustainable investments with an environmental objective aligned with the EU Taxonomy?**

Sustainable investments that are aligned with the EU Taxonomy (referred to in the table as “EU Taxonomy aligned”) consist of investments in companies whose economic activities substantially contribute to the environmental objectives of climate change mitigation and/or adaptation as defined by the EU Taxonomy in accordance with the eligibility and technical selection criteria (“EU Taxonomy Technical Selection Criteria”).

DPAM’s methodology for assessing the EU Taxonomy alignment of investee companies is based on data provided either by the investee companies or by third party providers. The latter use a mixed approach:

- Firstly, a direct mapping between the business activities in their own sectoral classification system and the economic activities covered by the Technical Selection Criteria of the EU Taxonomy.
- Secondly, any business activity that could not be directly mapped is examined through a bottom-up assessment of its alignment with the EU Taxonomy’s Technical Selection Criteria.
- Any economic activity remaining after the first and second steps is considered not to be aligned with the EU Taxonomy.

In principle, the extent to which investments are investments in environmentally sustainable economic activities within the meaning of the EU Taxonomy is assessed by means of turnover (based on performance data provided by third-party suppliers).

Where information on the extent to which investments are investments in environmentally sustainable economic activities within the meaning of the EU Taxonomy cannot be readily obtained from information published by the

Taxonomy-aligned activities are expressed as a share of:

- **turnover** reflects the “greenness” of investee companies today.
- **capital expenditure** (CapEx) shows the green investments made by investee companies, relevant for a transition to a green economy.
- **operational expenditure** (OpEx) reflects the green operational activities of investee companies.

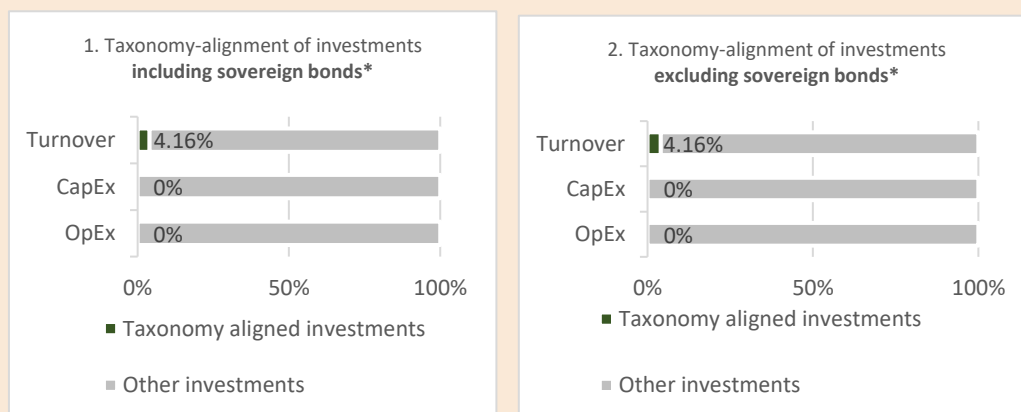
invested issuers, DPAM shall rely on equivalent information obtained by third-party providers from the invested issuers.

Applying this methodology, over the Reference Period, the Sub-fund is aligned for 4.16% with the first two objectives of the Taxonomy (environmental objectives of climate change mitigation and/or adaptation).

The compliance of these investments with the requirements set out in Article 3 of the EU Taxonomy is not subject to a guarantee provided by one or more auditors or a review by one or more auditors or a review by one or more third parties.

Commission Delegated Regulation (EU) 2023/363 of 31 October 2022 amending and correcting the technical regulatory standards set out in Delegated Regulation (EU) 2022/1288 as regards the content and format of information to be published in pre-contractual documents and periodic reports relating to financial products that invest in environmentally sustainable economic activities entered into force on 20 February 2023. In particular, it amends the format of the information to be published in the periodic reports in order to declare whether, and graphically demonstrate the extent to which, a sub-fund invests in fossil gas and/or nuclear energy related activities, which are in line with the EU Taxonomy ('climate change mitigation'). DPAM does not have sufficient data at this stage to publish this information in the periodic report for the Reporting Period. DPAM will make every effort to obtain this data in 2023.

*The graphs below show in green the percentage of investments that were aligned with the EU Taxonomy. As there is no appropriate methodology to determine the taxonomy-alignment of sovereign bonds\*, the first graph shows the Taxonomy alignment in relation to all the investments of the financial product including sovereign bonds, while the second graph shows the Taxonomy alignment only in relation to the investments of the financial product other than sovereign bonds.*



*\*For the purpose of these graphs, 'sovereign bonds' consist of all sovereign exposures*

**Enabling activities** directly enable other activities to make a substantial contribution to an environmental objective.

**Transitional activities are** activities for which low-carbon alternatives are not yet available and among others have greenhouse gas emission levels corresponding to the best performance.



are sustainable investments with an environmental objective that **do not take into account the criteria** for environmentally sustainable economic activities under Regulation (EU) 2020/852.

● ***What was the share of investments made in transitional and enabling activities?***

Not applicable

● ***How did the percentage of investments that were aligned with the EU Taxonomy compare with previous reference periods?***

Not applicable



**What was the share of sustainable investments with an environmental objective not aligned with the EU Taxonomy?**

Based on the approach described below, the Sub-fund invested 53.92% of its portfolio in sustainable investments with an environmental objective that are not aligned with the EU Taxonomy over the Reference Period.

Only two of the six environmental objectives defined by the EU Taxonomy are currently covered by the regulatory framework of the EU Taxonomy Technical Selection Criteria that determine alignment with the EU Taxonomy (adaptation and climate change mitigation). Similar criteria for the other four environmental objectives have yet to be developed. In the meantime, DPAM wishes to continue to make sustainable investments that contribute to environmental objectives not covered by the current EU Taxonomy Technical Selection Criteria, including key environmental objectives such as the sustainable use and protection of water and marine resources, the prevention and control of pollution and the protection and restoration of biodiversity and ecosystems.

To this end, DPAM has adopted and defined a specific framework for identifying the environmental objectives of these sustainable investments and assessing their contribution to these objectives.

This framework uses data from investee companies and third-party suppliers and assesses the negative and positive contribution of (potential) investee companies, as a percentage of their turnover, to the UN Sustainable Development Goals (SDGs) that can be attributed to environmental objectives.

DPAM will review and reassess this framework when the EU Taxonomy Technical Selection Criteria have been implemented for the other four environmental objectives defined by the EU Taxonomy.



### **What was the share of socially sustainable investments?**

Based on the approach described below, the Sub-fund invested 83.28% of its portfolio in sustainable investments with a social objective over the Reference Period. A European Taxonomy for social sustainability goals has yet to be developed. In the meantime, DPAM wishes to continue to make sustainable investments that contribute to the achievement of key social goals such as zero hunger, quality education and peace, justice and strong institutions.

To this end, DPAM has adopted and defined a specific framework for identifying the social objectives of these sustainable investments and assessing their contribution to these objectives. This framework uses data from investee companies and third-party suppliers and assesses the negative and positive contribution of (potential) investee companies, as a percentage of their turnover, to the UN Sustainable Development Goals (SDGs) that can be attributed to social objectives.

DPAM will review and reassess this framework when the EU Taxonomy Technical Selection Criteria have been implemented for the social objectives under the EU Taxonomy.



### **What investments were included under “other”, what was their purpose and were there any minimum environmental or social safeguards?**

Binding ESG screenings carried out in accordance with the investment strategy described above are applied to the whole sub-fund, excluding the:

- Liquid assets
- Derivative instruments
- Undertakings for collective investment
- Issuers that do not report sufficient information or are insufficiently covered by ESG research to judge their environmental and/or social characteristics.

The Sub-fund may invest or hold these types of assets for the purpose of achieving investment objectives, portfolio diversification, liquidity management and risk hedging.

Over the Reference Period, for liquidity management purposes, the Sub-fund was exposed to 2.09% cash. There are no minimum environmental or social guarantees on this allocation.



### **What actions have been taken to meet the environmental and/or social characteristics during the reference period?**

Over the Reference Period, the Sub-fund followed the actions and investment steps as described in its methodology, i.e:

On a quarterly basis, a normative screening has been established based on compliance with Global Standards.

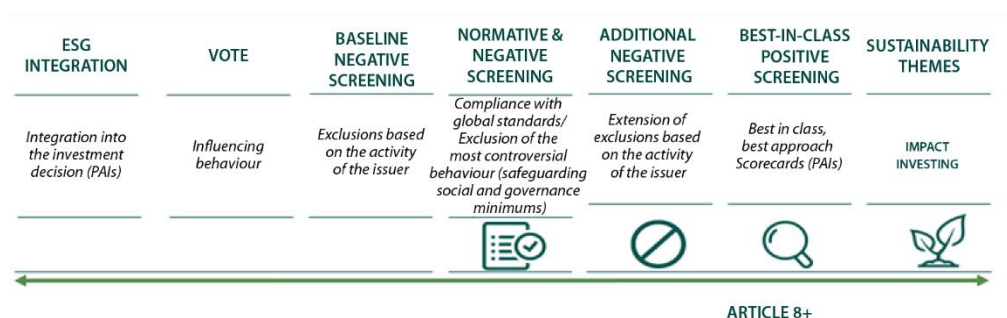
Subsequently, companies meeting the thresholds as defined in the activities excluded by DPAM's controversial activities policy were excluded.

On a quarterly basis, the controversy exposure of the companies in the investment universe was analysed to screen out the most severe controversies on environmental, social and governance issues.

Subsequently, on a semi-annual basis, the resulting universe was subject to a "best-in-class" ranking in order to retain only the best ESG profiles of companies on a list of securities eligible for management (10% of the lowest scores were removed from the eligible list by sector).

From this defined eligible universe, the research and management teams have applied their expertise to select the securities in the portfolio on the basis of an in-depth fundamental analysis, which also includes a thorough analysis of the various environmental, social and governance criteria relevant to the business sector. In addition, this qualitative analysis also includes consideration of the sustainability theme and the issuer's total contribution to the UN Sustainable Development Goals.

The stages of the investment process are outlined below:



**How did this financial product perform compared to the reference benchmark?**

Not applicable

- **How does the reference benchmark differ from a broad market index?**

Not applicable

- **How did this financial product perform with regard to the sustainability indicators to determine the alignment of the reference benchmark with the environmental or social characteristics promoted?**

Not applicable

- **How did this financial product perform compared with the reference benchmark?**

Not applicable

**Reference benchmarks** are indexes to measure whether the financial product attains the environmental or social characteristics that they promote.

- ***How did this financial product perform compared with the broad market index?***  
Not applicable